

Pre-University Industry Exposure Program

For ages 15-17

ARCH's Industry Exposure Program seeks to connect the inspiration that drives students' university choices with the future careers that they envision. By bringing together professionals from different fields, we strive to expose students to role models who will share their experience and expertise.



Healthcare

 **Gleneagles Hospital**
HONG KONG
港怡醫院

Humansa



Architecture & Real Estates Investments

 **新世界發展有限公司**
New World Development Company Limited



Healthcare

For students aged 15-17

Gain real-life clinical exposure on medical sciences and practice at a multi-specialty private hospital and a health center in Hong Kong! From exclusive visits to operation theatre (📍 Humansa), clinical labs and seminars on various medical subfields, students will be enlightened to the standards of private medical care first-hand. Learn from qualified doctors on university admissions preparation and journey to becoming a healthcare professional!

Each student will receive a certificate of participation with acknowledgement by Gleneagles Hospital Hong Kong, Humansa, and ARCH Education upon completion of the course.



Lectures*

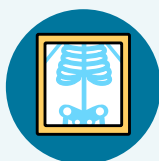
Hospital Visits & Seminars

Shadowing Experience^

Students will have a chance to visit the following clinical and allied health departments at Gleneagles Hospital Hong Kong and Humansa:



Clinical Laboratory



Radiology Department



Radiotherapy & Oncology Centre



Rehabilitation Centre



Specialist Outpatient Clinics



Pharmacy



Dentistry



Ophthalmology

Dates	Course Outline	
Jul 15 (Sat)	Introductory Lecture* 📍 ARCH Education Center	
Jul 18 (Tue)	Seminar 📍 Gleneagles Hospital Hong Kong	Hospital Visits/ Shadowing^ 📍 Gleneagles Hospital Hong Kong
Jul 19 (Wed)		
Jul 22 (Sat)	Lecture* 📍 ARCH Education Center	Site Visit 📍 Humansa Dental (New World Tower)
Jul 26 (Wed)	Site Visit 📍 Humansa Eye (Victoria Dockside)	
Jul 29 (Sat)	Wrap-up Lecture* 📍 ARCH Education Center	

**Course fee required*

Course fees for lectures offered by ARCH Education

Regular Fee*: HK\$22,000

For ARCH engaged student*: HK\$15,000

**Please refer to application form for program itinerary.*

^Clinical shadowing will be offered to selected students who met the assessment requirement.

**Course fees are only required for the lectures offered by ARCH Education. All of Gleneagles' and Humansa's offerings are delivered on a non-profit voluntary basis free-of-charge. Terms & Conditions apply.*

Architecture & Real Estates Investments

For students aged 15-17

The course aims to introduce the fundamentals of modern architecture designs in relations to community and sustainability. Combined with business theories in financial management, students will engage in a business challenge that seeks to frame their immersion in 3 commercial and infrastructure properties developed by New World Development Company Limited (NWD). Guided by experts from NWD and ARCH's instructors, students will learn the multifaceted discipline of property development from material science to urban planning as well as marketing and communications.

Each student will receive a certificate of participation with acknowledgement by New World Development and ARCH Education upon completion of the course.



Lectures*



K11 MUSEA
Victoria Dockside



K11 ATELIER
King's Road



11SKIES

Dates	Course Outline
Jul 31 (Mon)	Lecture on Architecture* 📍 ARCH Education Center
Aug 1 (Tue)	Site Tour 📍 K11 MUSEA, Victoria Dockside
Aug 2 (Wed)	Site Tour 📍 K11 ATELIER, King's Road
Aug 3 (Thur)	Site Tour 📍 11SKIES
Aug 5 (Sat)	Wrap-up Lecture* 📍 ARCH Education Center

**Course fee required*

Course fees for lectures offered by ARCH Education

Regular Fee[^]: HK\$12,000

For ARCH engaged student[^]: HK\$8,000

[#]Please refer to application form for program itinerary.

[^]Course fees are applicable to lecture days only.

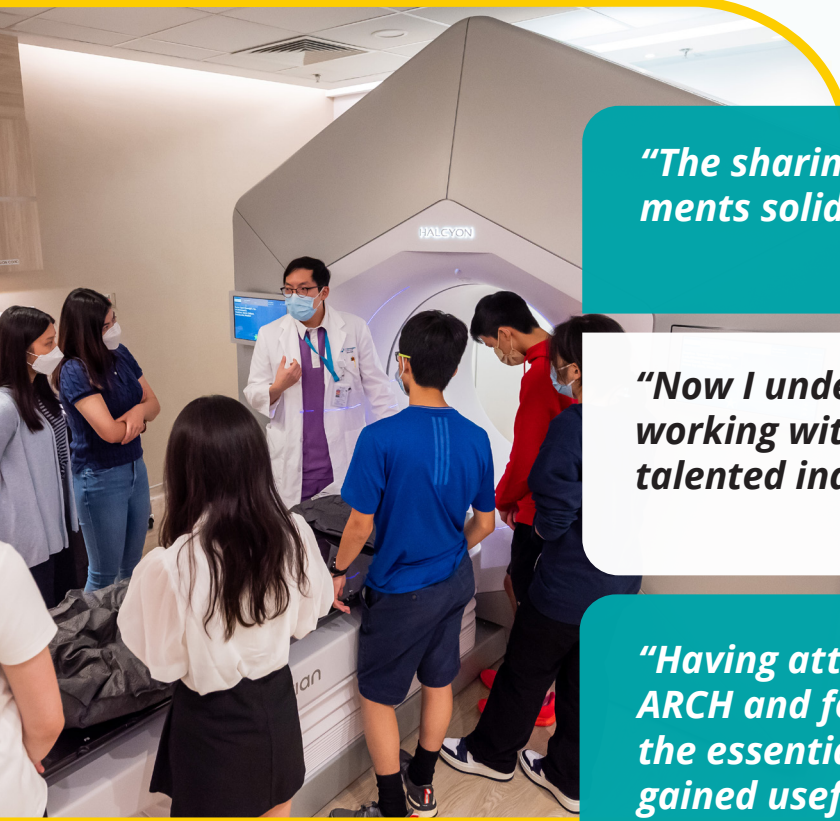
Terms & Conditions apply.



新世界發展有限公司
New World Development Company Limited

New World Development is a premium brand infused with a unique personality defined by The Artisanal Movement. Its core business areas include development and investment in commercial properties and infrastructure projects, boasting operations in Greater China, especially the Greater Bay Area.

Healthcare



"The sharing by professionals in various departments solidifies my passion in studying medicine."

E.P, Tonbridge School, 17 years old

"Now I understand being a doctor involves working with multidisciplinary team of other talented individuals in this sector."

R.W, Renaissance College, 16 years old

"Having attended workshops and lectures from ARCH and followed by a hospital visit, I learnt the essential skills needed to be a doctor and gained useful insights for my medicine application."

C.L, Benenden School, 17 years old

Architecture & Real Estates Investments

"It was an unbelievable and enjoyable experience to go on guided tours of green and sustainable property developments by NWD project planners and architects and closely interact with them!"

C.H, Diocesan Girls' School, 17 years old

"Not only was I able to do multiple site visits with professional architects, but the economical and architectural lectures were also really useful to me. I had a better understanding of what the architectural and real estate industry are like."

J.G, Chinese International School, 16 years old

